
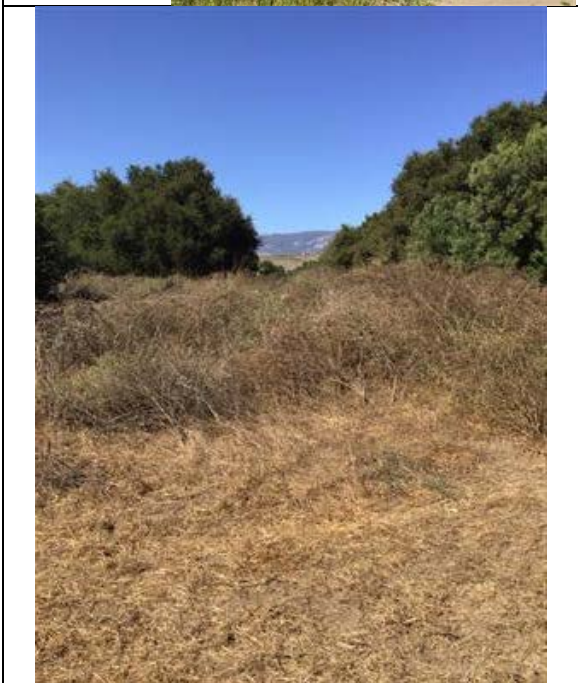




Work Area Description

Work Areas will be finalized ahead of crews progression, following pre-activity survey / site mark out.

	<p>Work Area #: 1</p> <p>Work Description: Remove fallen eucalyptus and standing deadwood of eucalyptus and small Monterey pine. Limb up large live eucalyptus to the extent feasible. Remove and stump grind young eucalyptus. Remove all jade plant; pull out by root if feasible, if not feasible, stump grind.</p>
	 <p>Work Area #: 2</p> <p>Work Description Mow dry radish and crown daisy.</p>
	



Work Area #: 3

Work Description: Mow dry wild radish and crown daisy.



Work Area #: 4

Work Description: Mow dry wild radish and crown daisy.





Work Area #: 5

Work Description: Remove dry eucalyptus litter, crown daisy, and wild radish. Lift low eucalyptus branches to the extent feasible. Remove and stump grind young eucalyptus. Pull out all nasturtium by root and dispose of off site (trash bags / tarps).



Work Area #: 6

Work Description: Remove dry wild radish, crown daisy, and foxtail grass around native sagebrush vegetation to the extent feasible. Remove giant yucca and stump grind.





Work Area #: 7

Work Description: Remove dry eucalyptus litter and lift low eucalyptus branches to the extent feasible. Remove and stump grind myoporum.



Work Area #: 8

Work Description: Remove dry eucalyptus litter and lift low eucalyptus branches to the extent feasible. Remove all young eucalyptus and acacia and stump grind removal sites. (Second round of acacia removal at this work area.)





Work Area #: 9

Work Description: Remove dry eucalyptus litter and lift low eucalyptus branches to the extent feasible.



Work Area #: 10

Work Description: Remove young Eugenia and remove all English ivy. Leave mature Eugenia. English ivy is climbing up oaks; remove by root if feasible and dispose of off site (using tarps and/or trash bags).





Work Area #: 11

Work Description: Remove acacia and Taiwan firethorn; stump grind removal sites. Clean up oak deadwood. Lift cypress branches to make trail accessible.



Work Area #: 12

Work Description: Remove dry eucalyptus litter and lift low eucalyptus branches to the extent feasible.





Work Area #: 13

Work Description: Remove myoporum and stump grind removal sites.



Work Area #: 14

Work Description: Remove Taiwan firethorn and stump grind removal sites.





Work Area #: 15

Work Description: Remove dry eucalyptus litter and lift low eucalyptus branches to the extent feasible. Remove young eucalyptus and stump grind removal site.



Work Area #: 16

Work Description: Remove young eucalyptus and stump grind removal sites.





Work Area #: 17

Work Description: Remove myoporum and stump grind removal site. Remove all tree tobacco by root.



Work Area #: 18

Work Description: Remove Taiwan firethorn and stump grind removal site.





Work Area #: 19

Work Description: Clean up 2 locations of large deadwood in work area.



Work Area #: 20

Work Description: Hedge dried wild radish and crown daisy.





Work Area #: 21

Work Description: Remove Eugenia and stump grind removal site.



Work Area #: 22

Work Description: Remove dry acacia.





Work Area #: 23

Work Description: Clean up dry oak limbs; leave large deadwood in place (“skeleton” of tree).



Work Area #: 24

Work Description: Remove fallen limbs and make clean cuts on surviving oak. Fungus observed; disinfect tools after use in this work area.





Work Area #: 25

Work Description: Remove two young ash trees and stump grind removal sites.



Work Area #: 26

Work Description: Pull out and remove all iceplant by root; dispose of off site (using tarps and/or trash bags).





Work Area #: 27

Work Description: Remove acacia and stump grind removal sites.



Work Area #: 28

Work Description: Remove acacia and stump grind removal sites.





Work Area #: 29

Work Description: Pull out and remove all iceplant and English ivy by root; dispose of off site (using tarps and/or trash bags).



Work Area #: 30

Work Description: Remove pittosporum and stump grind removal sites.





Work Area #: 31

Work Description: Pull out and remove all English ivy by root; dispose of off site (using tarps and/or trash bags).



Work Area #: 32

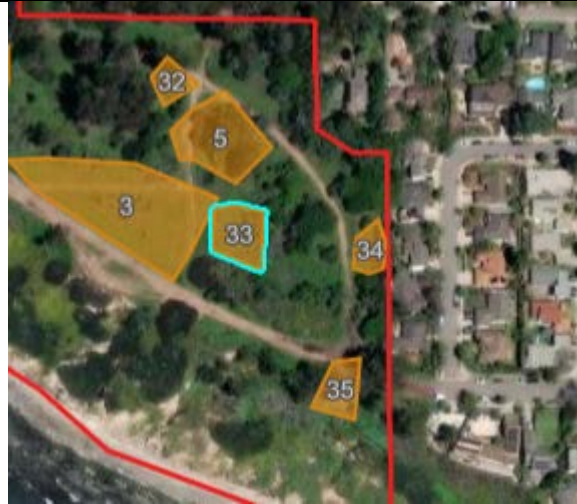
Work Description: Remove olive and stump grind removal site.





Work Area #: 33

Work Description: Remove pittosporum and stump grind removal sites. Remove all castor bean; cut off seed heads and bag for disposal off site. Hedge adjacent dry wild radish and crown daisy.



Work Area #: 34

Work Description: Remove all euphorbia lathyris, castor bean, and thistles; cut off seed heads of castor bean and bag for disposal off site. Thin out large encroaching ornamental African honeysuckle.





Work Area #: 35

Work Description: Remove large standing dead eucalyptus and acacia.



Work Area #: 36

Work Description: Remove young eucalyptus around Monterey cypress.





Work Area #: 37

Work Description: Remove all leaning trees at risk of failure.



Work Area #: 38

Work Description: Remove hazardous deadwood, young eucalyptus, acacia, and all leaning trees at risk of failure.

